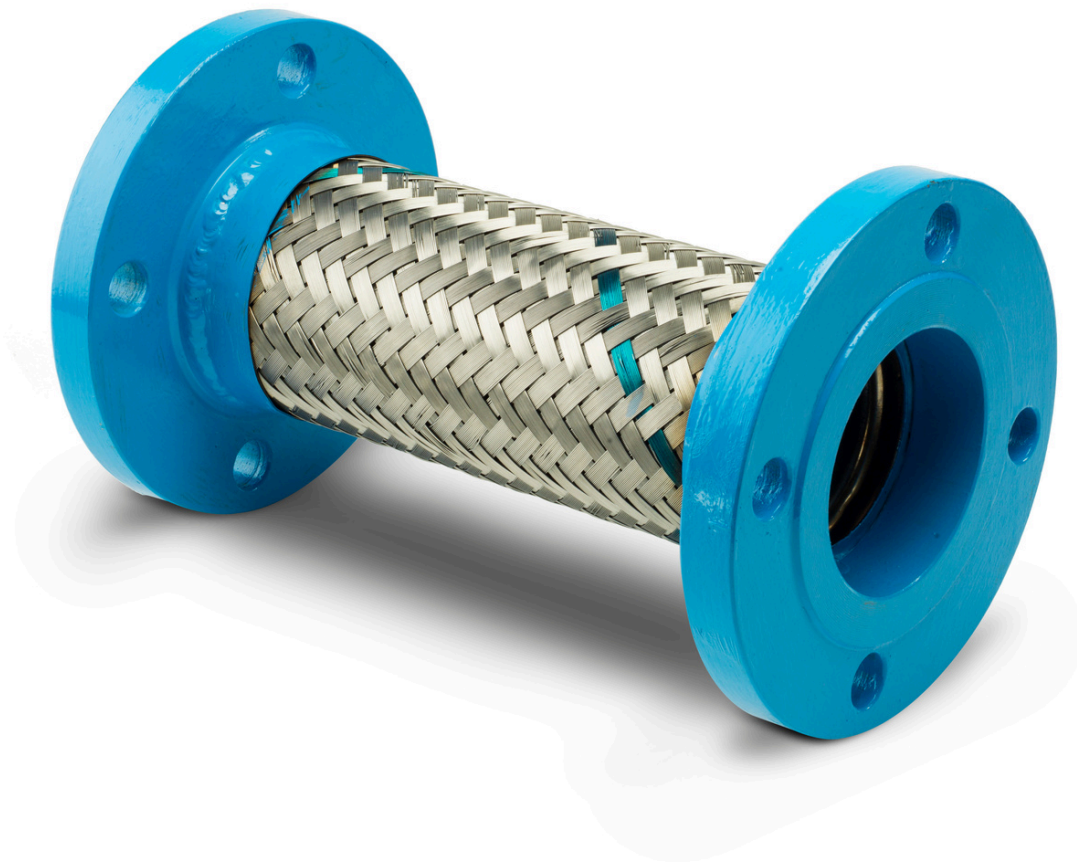


Copleflex^{MR}

tmf | Tubos
Mexicanos
Flexibles

Explosion-proof flexible conduit

Conduit fittings for hazardous locations



*Due to ongoing product improvements, the information contained in this brochure may be modified. Therefore, the specifications may vary.

Description:

Copleflex® is a flexible, explosion-proof conduit coupling that conducts and protects electrical wiring in hazardous (classified) locations.

Main applications:

Copleflex® is primarily used where a flexible component is required to accomplish difficult bends and/or to absorb vibration and movement of connected equipment in electrical conduit systems .

Copleflex® hermetic seal allows it to be installed in humid environments in the presence of liquids, dust, or gases. It is an essential component in refineries, gas and gasoline service stations, oil & gas platforms, emergency power plants, mines, etc.

Features:

Features:

- * **Explosion proof**, dust-ignition proof, waterproof
- * **Corrugated metallic internal body** that withstand explosive pressure (Class I) and mechanical abuse
- * **Outer metallic braid** provides continuous electrical path
- * **Interior insulating liner** prevents the formation of electrical arcs, protects against potential grounding caused by a short circuit in the lines, prevents flame propagation, and protects conductor from abrasion under vibration conditions.
- * **NPT fittings** for tight, rigid joints and ground continuity



Model: **ETGJH**



Specifications:

Measures of $\frac{1}{2}'' \text{ } \varnothing$ a $\varnothing 2'' \varnothing$

Nominal diameter	Dimensions			
	"A"		Minimum radius of curvature	
	Inches	mm	Inches	mm
1/2"	1"	25	16"	406
3/4"	1-7/32"	31		
1"	1-1/8"	29		
1 1/4"	1-11/32"	34		
1 1/2"	1-3/4"	44		
2"	1-25/32"	45		

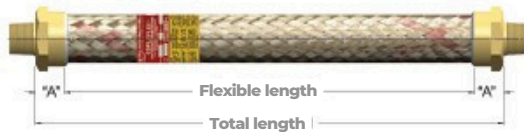
Nominal diameter	Flexible length	Catalog #
1/2"	4"	ETGJH14
	6"	ETGJH16
	8"	ETGJH18
	10"	ETGJH110
	12"	ETGJH112
	15"	ETGJH115
	18"	ETGJH118
	21"	ETGJH121
	24"	ETGJH124
	27"	ETGJH127

Nominal diameter	Flexible length	Catalog #
3/4"	4"	ETGJH24
	6"	ETGJH26
	8"	ETGJH28
	10"	ETGJH210
	12"	ETGJH212
	15"	ETGJH215
	18"	ETGJH218
	21"	ETGJH221
	24"	ETGJH224
	27"	ETGJH227

Extent	Flexible length	Catalog #
1 1/2"	12"	ETGJH512
	15"	ETGJH515
	18"	ETGJH518
	21"	ETGJH521
	24"	ETGJH524
	27"	ETGJH527
	30"	ETGJH530
	33"	ETGJH533

Extent	Flexible length	Catalog #
2"	12"	ETGJH612
	15"	ETGJH615
	18"	ETGJH618
	21"	ETGJH621
	24"	ETGJH624
	27"	ETGJH627
	30"	ETGJH630
	33"	ETGJH633

Flexible conduit model **ETGJH**



Male NPT threaded connection on both outer ends.

Construction materials:

- NPT male threaded connections in forged brass.
- Flexible metal tubing in AISI 300 series stainless steel.
- Brass wire mesh.
- Insulating inner sheath.

Extent	Flexible length	Catalog #
1"	6"	ETGJH36
	8"	ETGJH38
	10"	ETGJH310
	12"	ETGJH312
	15"	ETGJH315
	18"	ETGJH318
	21"	ETGJH321
	24"	ETGJH324
	27"	ETGJH327
	30"	ETGJH330

Extent	Flexible length	Catalog #
1 1/4"	12"	ETGJH412
	15"	ETGJH415
	18"	ETGJH418
	21"	ETGJH421
	24"	ETGJH424
	27"	ETGJH427
	30"	ETGJH430

Compliance:

$\frac{1}{2}'' \varnothing$ y $\frac{3}{4}'' \varnothing$ Clase I, Div. 1 & 2, Grupos A, B, C Y D

1" \varnothing a 2" \varnothing Clase I, Div 1 y 2, Grupos C Y D

All diameters can be used in Class II, Division 1, Groups E, F, G.

Division 2, Groups F, G and Class III.

Custom lengths can be manufactured. Please consult your representative.



*Due to ongoing product improvements, the information contained in this brochure may be modified. Therefore, the specifications may vary.

Model: ETLK



Specifications:

Measures of $\frac{1}{2}'' \text{ } \varnothing$ a $2'' \text{ } \varnothing$

Nominal diameter	"A"		"B"		Minimum radius of curvature	
	Inches	mm	Inches	mm	Inches	mm
1/2"	1"	25	3-1/16"	78	16"	406
3/4"	1-7/32"	31	3-11/32"	85		
1"	1-1/8"	29	3-3/4"	95		
1 1/4"	1-11/32"	34	4-1/64"	102		
1 1/2"	1-3/4"	44	4-13/32"	112		
2"	1-25/32"	45	4-19/32"	117		

Extent	Flexible length	Catalog #
1/2"	4"	ETLK14
	6"	ETLK16
	8"	ETLK 18
	10"	ETLK 110
	12"	ETLK 112
	15"	ETLK 115
	18"	ETLK 118
	21"	ETLK 121
	24"	ETLK 124
	27"	ETLK 127
	30"	ETLK 130
	33"	ETLK 133
36"	ETLK 136	

Extent	Flexible length	Catalog #
3/4"	4"	ETLK 24
	6"	ETLK 26
	8"	ETLK 28
	10"	ETLK 210
	12"	ETLK 212
	15"	ETLK 215
	18"	ETLK 218
	21"	ETLK 221
	24"	ETLK 224
	27"	ETLK 227
	30"	ETLK 230
	33"	ETLK 233
36"	ETLK 236	

Extent	Flexible length	Catalog #
1 1/2"	12"	ETLK 512
	15"	ETLK 515
	18"	ETLK 518
	21"	ETLK 521
	24"	ETLK 524
	27"	ETLK 527
	30"	ETLK 530
	33"	ETLK 533
36"	ETLK 536	

Extent	Flexible length	Catalog #
2"	12"	ETLK 612
	15"	ETLK 615
	18"	ETLK 618
	21"	ETLK 621
	24"	ETLK 624
	27"	ETLK 627
	30"	ETLK 630
	33"	ETLK 633
36"	ETLK 636	

Flexible conduit model ETLK



The ETLK flexible coupling is made up of a Copleflex® model ETCJH



and it has an integrated UL female union nut at one end that is explosion-proof

Construction materials:

- NPT male threaded connections in forged brass.
- NPT female threaded union nut: Copper-free aluminum.
- Flexible metal tubing in AISI 300 series stainless steel.
- Brass wire mesh.
- Insulating inner sleeve.

Extent	Flexible length	Catalog #
1"	6"	ETLK 36
	8"	ETLK 38
	10"	ETLK 310
	12"	ETLK 312
	15"	ETLK 315
	18"	ETLK 318
	21"	ETLK 321
	24"	ETLK 324
	27"	ETLK 327
	30"	ETLK 330
	33"	ETLK 333
	36"	ETLK 336

Extent	Flexible length	Catalog #
1 1/4"	12"	ETLK 412
	15"	ETLK 415
	18"	ETLK 418
	21"	ETLK 421
	24"	ETLK 424
	27"	ETLK 427
	30"	ETLK 430
	33"	ETLK 433
36"	ETLK 436	

Compliance:

$\frac{1}{2}'' \text{ } \varnothing$ y $\frac{3}{4}'' \text{ } \varnothing$ Clase I, Div. 1 & 2, Grupos A, B, C Y D

1" \varnothing a 2" \varnothing Clase I, Div 1 y 2, Grupos C Y D

All diameters can be used in Class II, Division 1, Groups E, F, G.

Division 2, Groups F, G, and Class III.

Custom lengths can be manufactured. Please consult your representative.

*Due to ongoing product improvements, the information contained in this brochure may be modified. Therefore, the specifications may vary.

Model: ETGJH-SS



Specifications:

Measures of 1/2" Ø a 2" Ø

Nominal diameter	"A"		Minimum radius of curvature	
	Inches	mm	Inches	mm
1/2"	1 1/2"	38	16"	406
3/4"	1 1/2"	38		
1"	1 1/2"	38		
1 1/4"	1-9/16"	40		
1 1/2"	1-27/32"	47		
2"	1-15/16"	49		

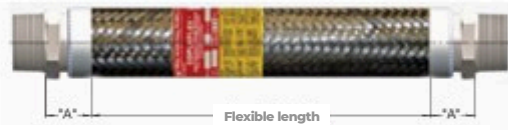
Extent	Flexible length	Catalog #
1/2"	4"	ETGJH14SS
	6"	ETGJH16SS
	8"	ETGJH18SS
	10"	ETGJH110SS
	12"	ETGJH112SS
	15"	ETGJH115SS
	18"	ETGJH118SS
	21"	ETGJH121SS
	24"	ETGJH124SS
	27"	ETGJH127SS

Extent	Flexible length	Catalog #
3/4"	4"	ETGJH24SS
	6"	ETGJH26SS
	8"	ETGJH28SS
	10"	ETGJH210SS
	12"	ETGJH212SS
	15"	ETGJH215SS
	18"	ETGJH218SS
	21"	ETGJH221SS
	24"	ETGJH224SS
	27"	ETGJH227SS

Extent	Flexible length	Catalog #
1 1/2"	12"	ETGJH512SS
	15"	ETGJH515SS
	18"	ETGJH518SS
	21"	ETGJH521SS
	24"	ETGJH524SS
	27"	ETGJH527SS
	30"	ETGJH530SS

Extent	Flexible length	Catalog #
2"	12"	ETGJH612SS
	15"	ETGJH615SS
	18"	ETGJH618SS
	21"	ETGJH621SS
	24"	ETGJH624SS
	27"	ETGJH627SS
	30"	ETGJH630SS

Flexible conduit model ETGJH-SS



Male NPT threaded connection on both outer ends.

Construction materials:

- NPT male threaded connections in AISI 300 series.
- Flexible metal tubing in AISI 300 series stainless steel.
- Mesh made of AISI 300 series stainless steel.
- Insulating inner sleeve.

Extent	Flexible length	Catalog #
1"	6"	ETGJH36SS
	8"	ETGJH38SS
	10"	ETGJH310SS
	12"	ETGJH312SS
	15"	ETGJH315SS
	18"	ETGJH318SS
	21"	ETGJH321SS
	24"	ETGJH324SS
	27"	ETGJH327SS
	30"	ETGJH330SS

Extent	Flexible length	Catalog #
1 1/4"	12"	ETGJH412SS
	15"	ETGJH415SS
	18"	ETGJH418SS
	21"	ETGJH421SS
	24"	ETGJH424SS
	27"	ETGJH427SS
	30"	ETGJH430SS

Compliance:

1/2" Ø y 3/4" Ø Clase I, Div. 1 & 2, Grupos A, B, C Y D

1" Ø a 2" Ø Clase I, Div 1 y 2, Grupos C Y D

All diameters can be used in Class II, Division I, Groups E, F, G.

Division 2, Groups F, G, and Class III

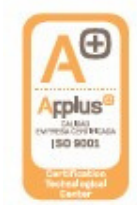


Custom lengths can be manufactured. Please consult your representative.

*Due to ongoing product improvements, the information contained in this brochure may be modified. Therefore, the specifications may vary.



NMX-CC-9001-IMNC-2015 Certified Company | ISO 9001:2015



Avenida Presidente Juárez No 265, Tlalnepantla, Estado de México,
México, CP 54090

Contact.: +52 (55) 1083 0860 | +52 (55) 5397 8655
ventascma@tmf.com.mx

www.tmf.com.mx

OUR BRANCHES

Querétaro

Tel.: 01 442 225 0601
01 442 225 0602
01 442 225 0600
ventasqro@tmf.com.mx

Puebla

Tel.: 01 222 248 6211
01 222 248 6380
01 222 249 0003
ventaspue@tmf.com.mx

Monterrey N.L.

Tel.: 01 818 374 8992
01 818 374 8415
01 818 374 8940
ventasmty@tmf.com.mx

Guadalajara

Tel.: 01 33 3267 2881
01 33 3267 2869
01 33 3898 3571
ventasjal@tmf.com.mx